

B a c k b o n e o f e v e r y c o n s t r u c t i o n



WonderMesh
www.wondermesh.com



WonderMesh has a functional dedicated team to the production of different wire mesh and wire work products for filtering, sieving and other applications across many industries.



These industries include food & chemical processing, water & waste water treatment, plastic, pharmaceuticals, healthcare, electronics, automotive, mineral extraction and of-course Construction.





Versatility
with
Innovation



In the late 90's an unusual application of stainless steel wire reels in an Architectural project by famous architect **Dominique Perrault** opened the doors for the use of this unique material in all the aspects of Architects. The aesthetic appeal and it's strong characteristics compared to the traditional demands of a structure encouraged us to create a completely modern unit in the name "**SUPER SCREENS PVT. LTD.**" in the heart of Economic Development in India, Maharashtra

Our complete experience and knowledge of more than 15 years in the manufacture of Industrial Wire-Mesh along with the top quality fabrication techniques and setup for the architectural Metal Installation in the name of **SIM DESIGNS & ENGG.**, encouraged our experts to take this bold step of giving complete turnkey jobs of installation of wire-mesh. Due to limited awareness and technical know-how in the line of fabrication in india, SDE can boast of being the best in the wire-mesh and fabrication in the industry.

These wonderful stainless steel meshes have an aura of creative conceptual application viz. ceiling, walls, exterior facades, partition screens, sun screens and the most modern applications being acoustic panels, canopies light diffusers catchers and reflectors.

A few of our projects include external facades for Music Channel **MTV office**, Architect: Sanjay Puri, Partition screens for **ICICI Lombard**, Architect: Ankura Patel.

We see great works from our Architects to dream new diverse and wiser applications for our wire-mesh and add to the endless possibilities of style and functionality to create a beautiful world.

To describe the best characteristics of this material, we would like to stress on the below

aspects of the wire-mesh in different applications:

SHINING CEILINGS:

When used in ceiling with proper lighting the wire-mesh catches light and colour and reflects them back. It looks shiney, transparent from one angle and from another it looks like complete opaque surface. Even though the open area ranges 5% to 70%. It can conceal the sprinklers, cable trays, acoustic insulations and conduits without limiting their basic functions. Any sort of light installation is possible without affecting the beauty of wire-mesh.

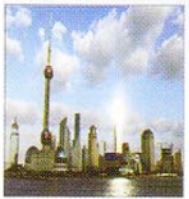
PROJECTION SCREENS FOR DISPLAY:

It can be used for wall cladding as protection screens for display of light and colour. These futuristic versions of free falling textures can transform any space into an experience. Maintenance is very easy as it provides a life-long finish and its performance gives a look of delicate fabric. The mesh panel can be fabricated in such a manner that they can be removed to ensure easy access to any equipment or maintenance requiring material hidden behind them.

PARTITION UNITS WITH HIGH TRANSPARENCY:

They can be used as effective security partitions between customs and non-custom areas like airports without harming the transparency and openness of the area. Depending on the requirement the mesh can be weaved in different densities so as to achieve different kinds of opacity. The mesh is strong enough to support itself and can blend with all types of curves and bends to give a superficial finish to the elements of a building.





WEIGHTLESS METALLIC MANTLES FOR BUILDINGS (EXTERIORS):

The free-falling metallic fabrics with excellent shine and strength can be used to envelope entire buildings (square, round or any shape) enhancing the beauty and the aesthetic values of the buildings. Depending on the density of the wire-mesh and the angle of lighting the protective mesh maintains a fine balance of being an opaque shiny envelope as well as relate beautifully to the open culture buildings by revealing high levels of transparency. The textile-like characteristics and the flexibility of the material makes the place come alive. The endless possibilities of the usage of the mesh as sunscreens, facade, and safety balustrade are easy to maintain and does not require any special treatment for cleaning. The mesh has an unlimited service life and can be completely recycled, thus proving to be a completely recyclable product.

LIGHT AT DIFFERENT ANGLES DEFINES OPACITY AND TRANSPARENCY:



The aesthetic value of the stainless steel mesh is derived from light. The natural sunlight enhances the beauty of the shiny wire-mesh when the material reflects the light with equal brilliance.

The same structure can be made to look opaque when the flow of the light is flatter on the surface. With a change in the angle the opacity can be varied. To make the mesh transparent, it can be lighted from inside which makes the mesh looks darker and shines even brilliantly. The unique Antique Matt finish offered by us gives soft silver shine when finished with good lighting.

FLEXIBILITY:



Depending on the basic structure and design, the wire-mesh can be rolled into one or both the directions. It can be used as rolling shutters or sun-screen without any sort of deformation on the texture.

UNLIMITED DIMENSIONS:

The stainless steel mesh can be weaved up to a maximum width of 6.5 meters with unlimited length rolls. They can be sized as per the requirements thus allowing an architect to think seamlessly, generously and spaciouly to create a unique experience.

FIRE-PROOF AND UNLIMITED LIFE:

All the material used for the manufacture of the wire-mesh is 100% fireproof. Hence, they can meet the most stringent requirements of non-flammability, and can also conceal the sprinkler systems without affecting the functionality. The stainless steel grades used are non-corrosive in nature

and give unlimited service life. It is also 100% recyclable and proves to be a cost-effective product while considering the life-cycle cost.

NON-CORROSIVE AND WEATHER RESISTANT:



We at WONDERMESH treat the wires with a thin colourless layer of a chemical formulae to make it resistant to extreme, polluted, high-dust and dirty environments. Our continuous research has enabled us to identify and develop some specific grades and treatment methods to make it fool-proof in the most difficult kinds of atmospheric conditions. Different kinds of alloys of Stainless Steel are available at our disposal with specific combinations of chrome, nickel and molybdenum; so that we can provide the best solution for specific applications for a life-long service.

THE MOST GENERALLY USED STAINLESS STEEL GRADES ARE:

DIN 1.4301 - SS 304 - The most basic type of steel alloy with chrome and nickel. This is corrosion proof at normal atmosphere conditions and is well advised for interior application.

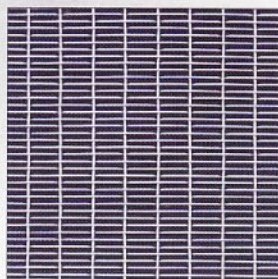
DIN 1.4404 - SS 316 - Advanced version of Stainless Steel with chrome, nickel and molybdenum in higher concentration to make it corrosion proof in extreme weather conditions and coastal areas.

In case of extreme weathers, combined with pollution and gaseous atmospheres; particularly for applications in exteriors in india, we advise specially treated above mentioned alloys or altogether different special materials depending on the application.

SERVICE:

We are a complete solution provider for the installation of wire-mesh, right from the selection of right material, defining the transparency or density of the material, selecting the most appropriate method of installation to the right kind of lighting and maintenance tips for long-lasting beauty. We have short-listed vendors who can give you the perfect lighting systems and also cleaning professionals so that no stone is left unturned to ensure a happy customer. For WONDER MESH every project is a unique experience and a mission to be accomplished ensuring economic parameters of the project.

We cut the wire-mesh into different shapes, forms and deliver them in rolls and sheets to avoid unprofessional handling and damage to the material. On request we can provide you with supplementary information.

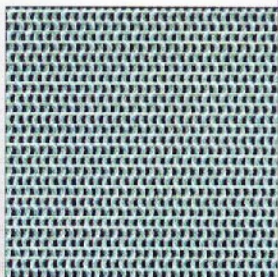
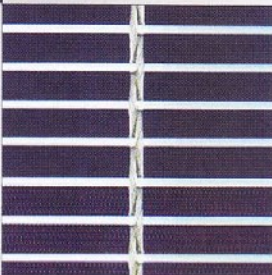


◀ Asahi

Open Area: approx. 61,7 %
Cable Pitch: 17,5 mm
Weft wire Pitch: 3,75 mm
Thickness: approx. 3,2 mm
Maximum mesh width: 6,5 m

Broadband ▶

Open Area: approx. 69 %
Cable Pitch: 100 mm
Weft wire Pitch: 20 mm
Thickness: approx. 12 mm
Maximum mesh width: 6,5 m

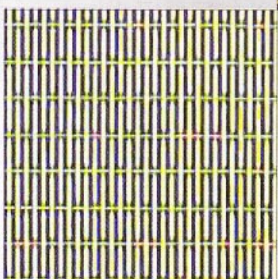
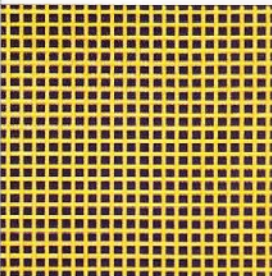


◀ Shockwave

Open Area: approx. 23,9 %
Cable Pitch: 4,6 mm
Weft wire Pitch: 8,0 mm
Thickness: approx. 6 mm
Maximum mesh width: 6,5 m

Algo ▶

Open Area: approx. 44,4 %
Pitch: 7,5 mm
Thickness: approx. 2 mm
Maximum mesh width: 1 m or 1,3 m

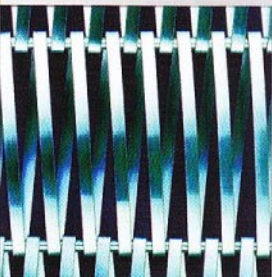


◀ Blanco

Open Area: approx. 45,7 %
Pitch wire: 110 mm
Pitch wire: 1,5 mm: 17,5 mm
Thickness: approx. 3 mm
Maximum mesh width: 1,3 m
Standard mesh width : 2 m

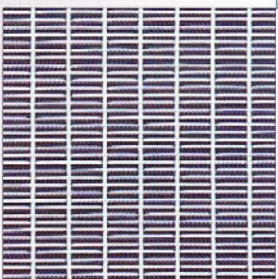
Foster ▶

Open Area: approx. 50 %
Spiral Pitch: 20 mm
Rod Pitch: 100 mm, other on request
Thickness: approx. 22 mm
Maximum width: on request



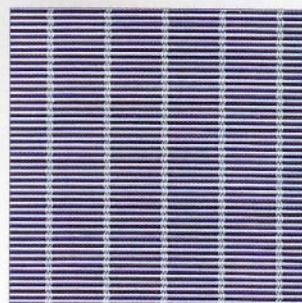
◀ Castelline

Open Area: approx. 50,6 %
Cable Pitch : 17,5 mm
Weft wire Pitch: 3,5 mm:
Thickness: approx. 4,5 mm
Maximum mesh width: 6,5m
Standard mesh width : 4 m



Product Specification

www.wondermesh.com

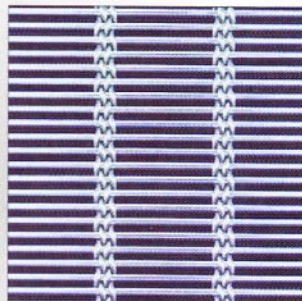
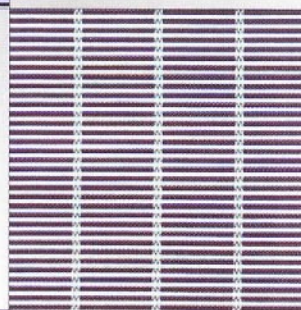


◀ Kalimera

Open Area: approx. 44,3 %
Cable Pitch: 26,4 mm
Weft wire Pitch: 3 mm
Thickness: approx. 3 mm
Maximum mesh width: 6,5 m
Standard mesh width : 4 m

Adio ▶

Open Area: approx. 44 %
Cable Pitch: 36 mm
Weft wire Pitch: 4 mm
Thickness: approx. 3,5 mm
Maximum mesh width: 6,5 m
Standard mesh width : 4 m

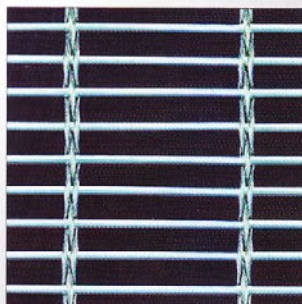
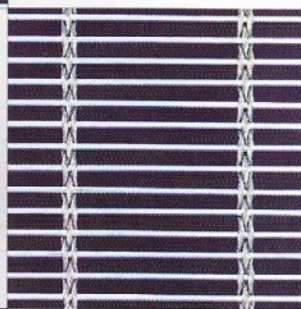


◀ Festo

Open Area: approx. 40 %
Cable Pitch: 50 mm
Weft wire Pitch: 6 mm
Thickness: approx. 7 mm
Maximum mesh width: 6,5 m
Standard mesh width : 4 m

Serene ▶

Open Area: approx. 62,1 %
Cable Pitch: 80 mm
Weft wire Pitch: 10 mm
Thickness: approx. 6,2 mm
Maximum mesh width: 6,5 m
Standard mesh width : 4 m

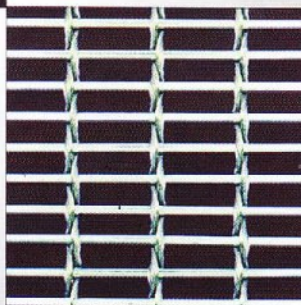


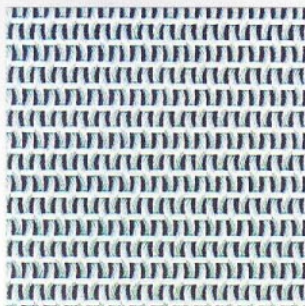
◀ Spacio

Open Area: approx. 65,9 %
Cable Pitch: 110 mm
Weft wire Pitch: 14,5 mm
Thickness: approx. 10 mm
Maximum mesh width: 6,5 m
Standard mesh width width: 4 m

Tuscon ▶

Open Area: approx. 61,5 %
Cable Pitch: 40 mm
Weft wire Pitch: 14,5 mm
Thickness: approx. 10 mm
Maximum mesh width: 6,5 m
Standard mesh width : 4 m





◀ Evolution ▶

Open Area: approx. 21%
Cable Pitch: 5 mm
Weft wire Pitch: 10 mm
Thickness: approx. 7,5 mm
Maximum mesh width: 6,5 m
Standard mesh width : 4 m

Palio ▶

Open Area: approx. 43 %
Cable Pitch: 6 mm
Weft wire Pitch: 8 mm
Thickness: approx. 5,5 mm
Maximum mesh width: 6,5 m
Standard mesh width : 6 m

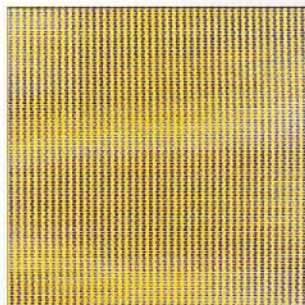
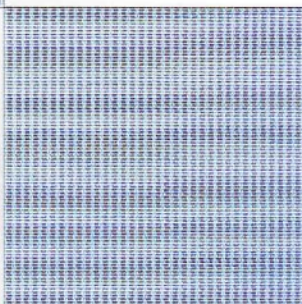


◀ Dicor ▶

Open Area: approx. 31,7 %
Cable Pitch: 3,2 mm
Weft wire Pitch: 6 mm
Thickness: approx. 3 mm
Maximum mesh width: 6,5 m
Standard mesh width : 6 m

Mintos ▶

Open Area: approx. 37,2 %
Cable Pitch: 3,5 mm
Weft wire Pitch: 1,43 mm
Thickness: approx. 1,3 mm
Maximum mesh width: 6,5 m
Standard mesh width : 3 m

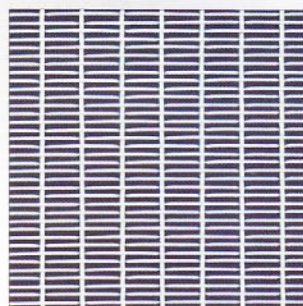
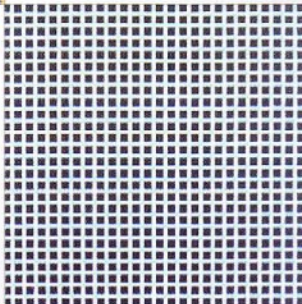


◀ Sonata ▶

Open Area: approx. 37,2 %
Cable Pitch: 3,5 mm
Weft wire Pitch: 1,43 mm
Thickness: approx. 1,3 mm
Maximum mesh width: 6,5 m
Standard mesh width : 3 m

Checkmate ▶

Open Area: approx. 42,3%
Cable Pitch: 5 mm
Weft wire Pitch: 10 mm
Thickness: approx. 1,3 mm
Maximum mesh width: 6,5 m
Standard mesh width : 4 m

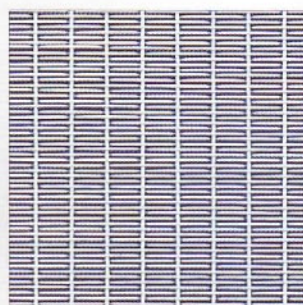
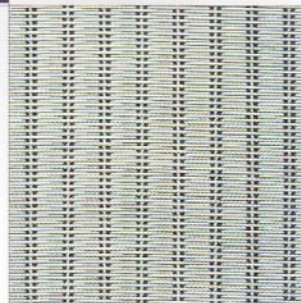


◀ Helios ▶

Open Area: approx. 57 %
Cable Pitch: 17,5 mm
Weft wire Pitch: 4,5 mm
Thickness: approx. 4,5 mm
Maximum mesh width: 6,5 m
Standard mesh width : 4 m

Bristol ▶

Open Area: approx. 5 %
Cable Pitch: 17,5 mm
Weft wire Pitch: 1,5 mm
Thickness: approx. 4,5 mm
Maximum mesh width: 6,5 m
Standard mesh width : 3 m

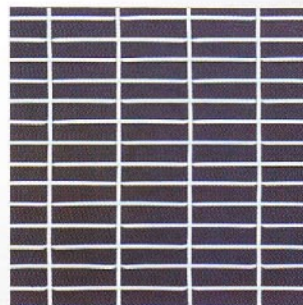
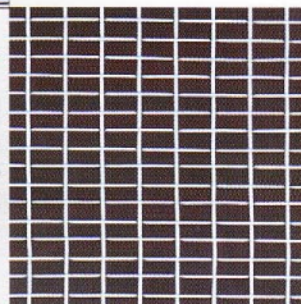


◀ Opal ▶

Open Area: approx. 35,4%
Cable Pitch: 17,5 mm
Weft wire Pitch: 2,5 mm
Thickness: approx. 4,5 mm
Maximum mesh width: 6,5 m

Pulsar ▶

Open Area: approx. 72,9 %
Cable Pitch: 17,5 mm
Weft wire Pitch: 8,5 mm
Thickness: approx. 4,5 mm
Maximum mesh width: 6,5 m

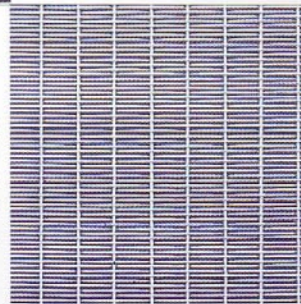


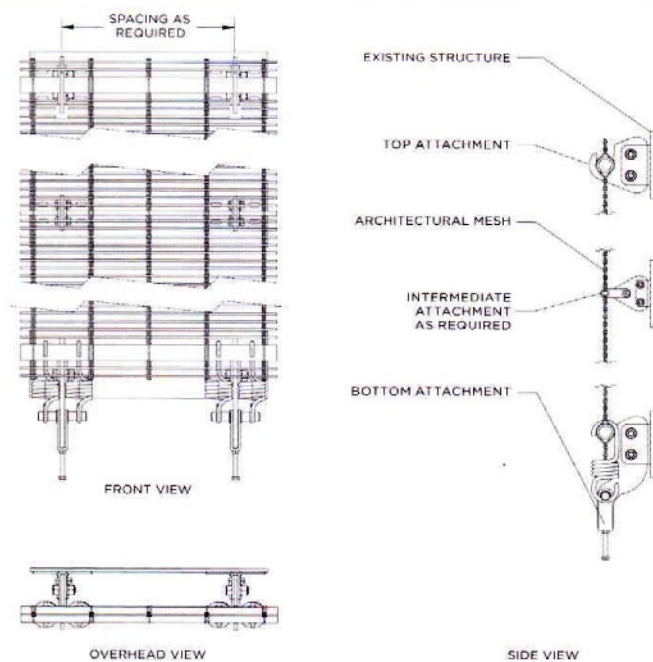
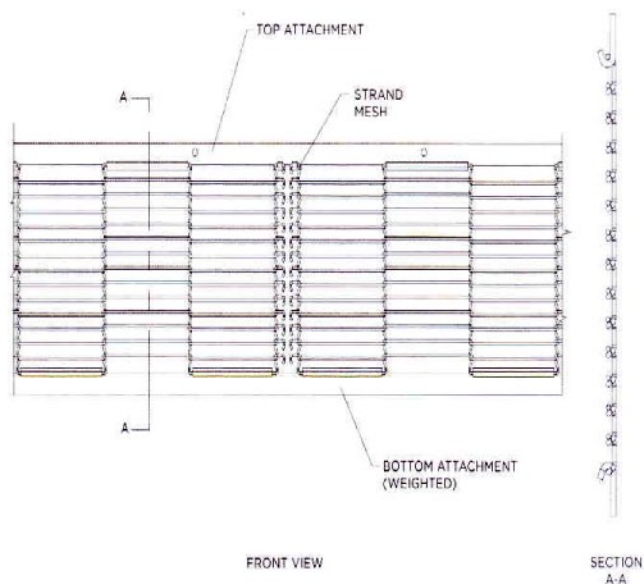
◀ Endura ▶

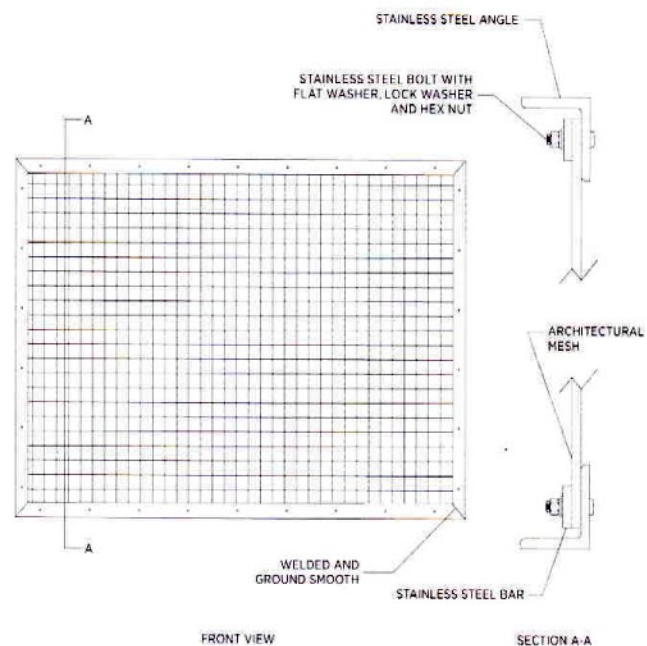
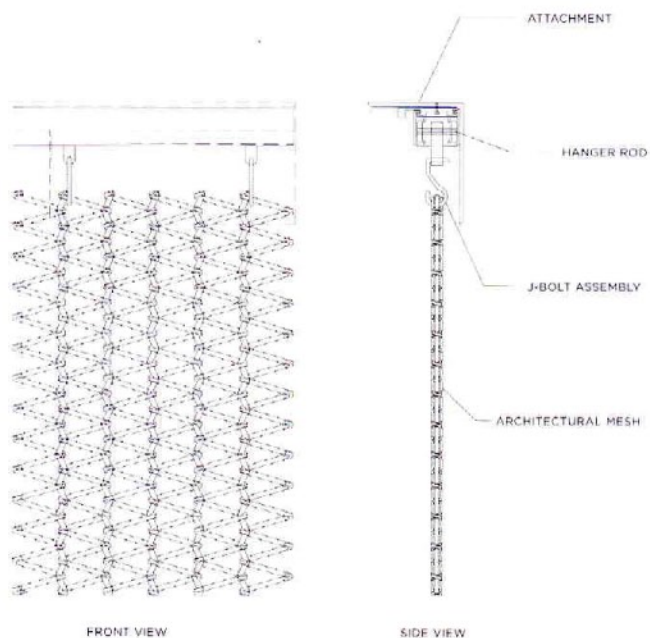
Open Area: approx. 75,4 %
Cable Pitch: 35 mm
Weft wire Pitch: 10 mm
Thickness: approx. 4,5 mm
Maximum mesh width: 6,5 m

Twill ▶

Open Area: approx. 41,1 %
Cable Pitch: 17,5 mm
Weft wire Pitch: 2,25 mm
Thickness: approx. 3,2 mm
Maximum mesh width: 6,5 m







**APPLICATIONS**

- * PARKING GARAGES
- * FACADE REHABILITATION
 - * CANOPIES
- * SUNSCREENS - HORIZONTAL AND VERTICAL
- * DRAPERY AND OTHER WINDOW TREATMENTS
 - * SPACE DIVIDERS
- * SEMI - PRIVATE SCREENING
- * LIGHT DIFFUSERS, CATCHERS AND REFLECTORS
 - * FUTURE DESIGN ELEMENTS
- * STAIR AND HANDRAIL SYSTEMS
- * ARCHITECTURAL GRILLWORK
 - * CASEWORK
 - * FENCING
- * DISPLAY AND SIGNAGE
- * COUNTER AND FURNITURE SURFACES
- * WALL, FLOOR, AND CEILING PANELS
 - * EXTERIOR FACADE PANELS
 - * SECURITY SCREENS
- * COLUMN COVERS, DOOR PANELS
 - * ELEVATOR CABS
 - * ESCALATOR WALLS
- * CUSTOM APPLICATIONS

**INSTALLATION**

Wonder Mesh maintains a fully staffed engineering department to assist clients with installation details, framing design, load characteristics and other issues associated with its products. Approval drawings can be offered depending on the requirements and scope required. Wonder Mesh engineers are also available for on-site installation supervision.

Please contact Wonder Mesh for information on its proprietary systems for flexible mesh applications, as well as suggestions for detailing panel and infill materials.

FABRICATION

If a project requires any particular panels than Wonder Mesh fabrication department can help you to provide the service. Please contact to discuss about fabrication needs.

FINISHES

For interior applications, Wonder Mesh offers background- painted finishes on its rigid woven meshes. Custom finish options may be recommended upon review of the project requirement by the Wonder Mesh engineering department.

NON-CORROSIVE

Stainless steel provides long-term value year after year. Wonder Mesh stainless steel products are designer-selected to meet any corrosive application and to ensure long life.

MAINTENANCE

Resistant to scratches, denting and corrosion, Wonder Mesh requires minimum maintenance. All Wonder Mesh products are delivered clean and free of oil and residue.

For interiors, regular cleaning can be accomplished by vacuum, dust mop or soft cloth. More extensive cleaning involves the use of a soft bristle brush with a mild, water - soluble detergent. No solvents or retail cleaning materials should be used.

To ensure the lasting beauty and continued life of stainless steel products mounted in exterior applications, Wonder Mesh recommends at least yearly cleaning with high pressure water (powder washing) to remove potentially harmful pollutions and oxidants. More frequent cleaning may be required in highly aggressive environment - seaside location or industrialized, polluted areas - or in external areas that will not be reached by regular rainfall.

REFURBISHING AND RECYCLING


If mesh is damaged, it can be shipped back to the Wonder Mesh facility to be repaired and replaced. Please consult Wonder Mesh for pricing.

Stainless steel is a readily recycled material. Recycling facilities exist throughout the country and abroad.

We are a complete Engg. group; advice correct selection of grade and Installation method for the kind of environment and the general corrosion area at the site of installation; in order to give you a time-proof installation of the products.

Generally, we decide the grade of the material to be used on the following parameters:

- * Location (Close to the coastal area or dry area)
- * Exteriors or Interiors (If Interior is it Air-conditioned)
- * Proximity of dust accumulation depending on the location (eg: closer to the main road or a busy street)
- * Finish required after Installation



Wonder Mesh develops, manufactures and markets stainless steel wire mesh for a wide variety of commercial and industrial applications. We have believed ourselves to be market leaders in developing new uses and encourage innovative designs.

Wonder Mesh product line of wire mesh is designed to meet the diverse needs of today's architect for various applications like ceiling, exterior facades, walls, carpeting, partitions, staircases, claddings etc.

We strive to satisfy customer needs with good quality products and exceptional support at the best value. Wonder Mesh is committed to the ongoing improvement of our products and services with the ultimate goal of providing the most efficient and cost-effective solution for our customers. Wonder Mesh maintains a large inventory of standard and custom designs and samples. For more information, please contact us at info@wondermesh.com.

Change of Address

WonderMesh
www.wondermesh.com

We have moved to

Suit No. 407,
Konark Shram,
Opp. Tardeo BEST Bus Depot,
156, Tardeo Road,
Mumbai - 400 034. INDIA.

Our New Contact nos. are :

Tel/Fax : (+91-22-67613990/66109000)